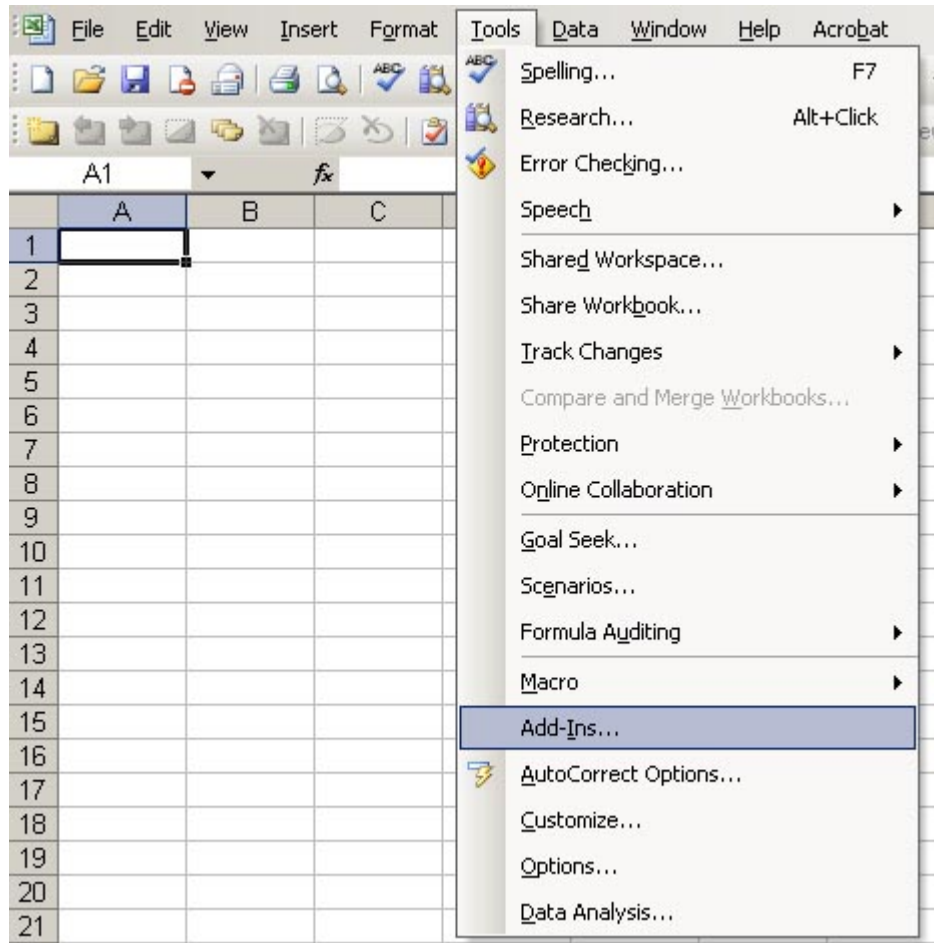


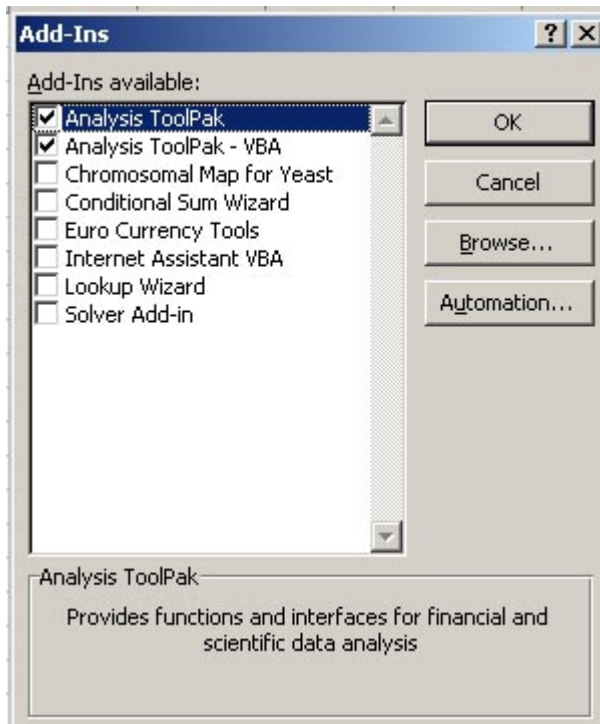
Setting up and running the Microsoft Excel CHIPOTLE Macro

Adding ChIPOTle to Excel Addins

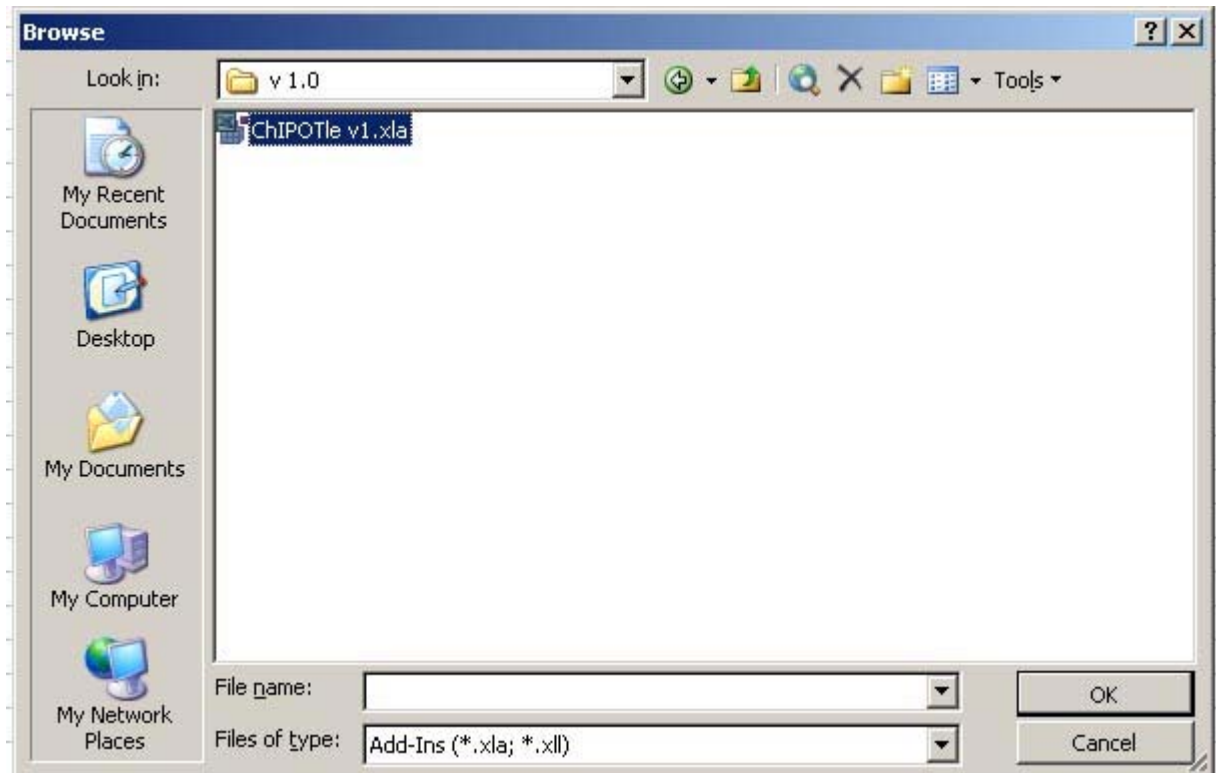
1) Go to the Tools menu Add-Ins



2) Select Browse



3) Locate where ChIPOTle was saved, and select OK. On the Add-Ins menus a new add-in should be there "Chromosomal Map for Yeast" with a check mark.



4) In the Tools menu a new a option "ChIPOTle v 1.0" should appear. Your ready to run!

